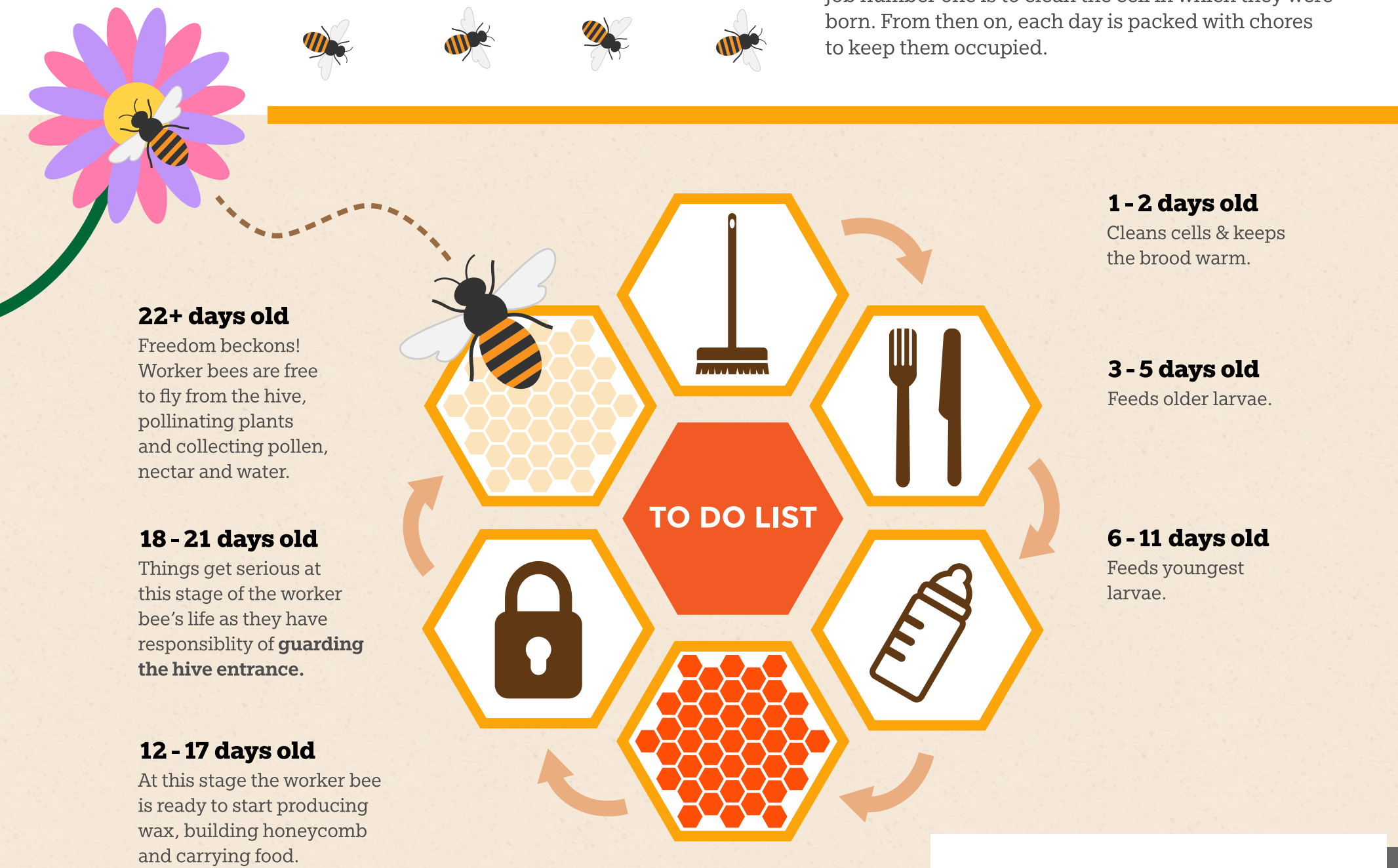


LIFE IN THE HIVE

A honeybee colony is always busy. There's never a dull moment in the life of a bee. Always regimented and ever productive, the honeybees that produce **propolis** are on-the-go from dusk 'til dawn.

For worker bees, duties begin from birth – yes, birth. Job number one is to clean the cell in which they were born. From then on, each day is packed with chores to keep them occupied.



**BY MID-SUMMER
THE HIVE CAN BE
HOME TO UP TO
35,000 HONEYBEES**

HER ROYAL HIGHNESS

The queen bee is very special and has an extremely important job. She is responsible for keeping the colony populated and throughout April and May she lays eggs day and night.



On average the queen will lay an egg every 20 seconds – sounds exhausting!

COMPLETING THE CYCLE



Honeybees are busiest in the summer and those bees born during the summer months will only live for around 40 days.



Bees born in the Autumn are afforded a longer life span and will survive through to the following spring.

#1

There is only ever one queen bee within any honeybee colony. The reason for this has not been determined but any attempts to introduce a second queen typically results in her death.

